

# SMART-RIG® CRANES

The Multi-Purpose Rigging Unit

## T1 GLOBAL MODEL - ELECTRIC / HAND PUMP JACK

Designed to meet or exceed 150% rated capacity. (CE certified, meets ASME, PALD, OSHA standards)  
No Operator License Required

### Technical specifications

Electric (115v/230v), or Hand Crank Winch Option for Hazardous Environments

Max load capacity: 1200 lbs. (545 kg.)

Hook Height: 21 ft. (6.6 m)

135 ft. (41 m) 1/4 in. steel cable  
Up to 10 stories depth

Dry Weight: 1300 lbs. (590 kg)

Weight w/ 47 gallons water: 1700 lbs. (770 kg)

Manual/hand pump jack

Speed: 30FPM (feet per minute) (9m/minute)

Wheels: Polyurethane on iron. Won't scuff interior flooring.

Counterweight system: 400 lb. capacity tank (180 kg)  
(fill with water, sand or cement)

Fits through 36 in. doorways and inside elevators  
(800 mm Width)

Pick and carry design (smooth, easy to move)

Steering: rear wheels connected to handle

Magnetic degree finder located on boom

Rear steer wheels with locking brakes

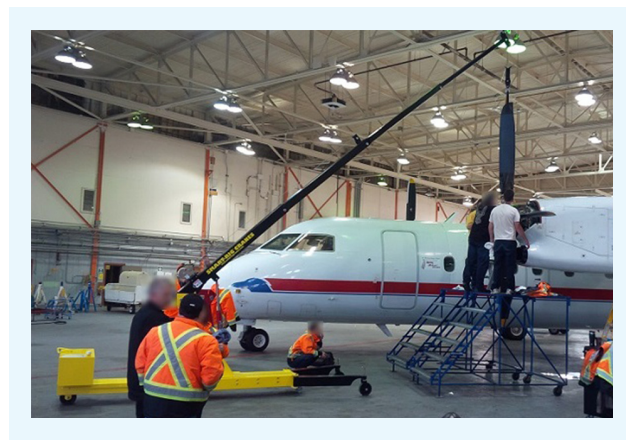
Powder coated protection

Industry-leading two year warranty

Safety Stops on Boom section

Snatch block and Tackle

Patent D728186



# SMART-RIG® CRANES

The Multi-Purpose Rigging Unit

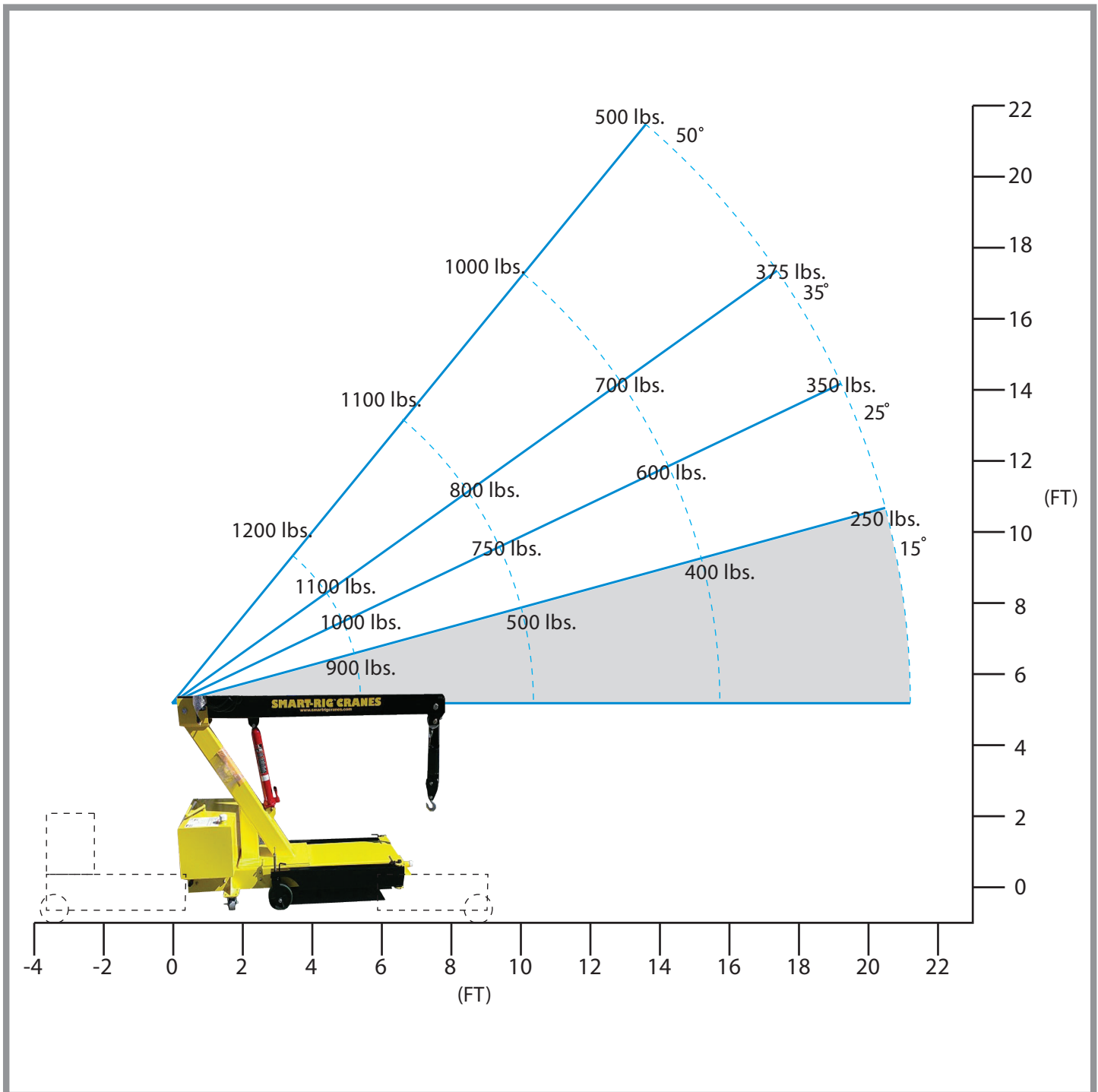
## T1 GLOBAL MODEL - ELECTRIC / HAND PUMP JACK

Designed to meet or exceed 150% rated capacity. (CE certified, meets ASME, PALD, OSHA standards)

No Operator License Required

**Load Bearing (Outriggers: 45°)**

*In lbs. & FT*



# SMART-RIG® CRANES

The Multi-Purpose Rigging Unit

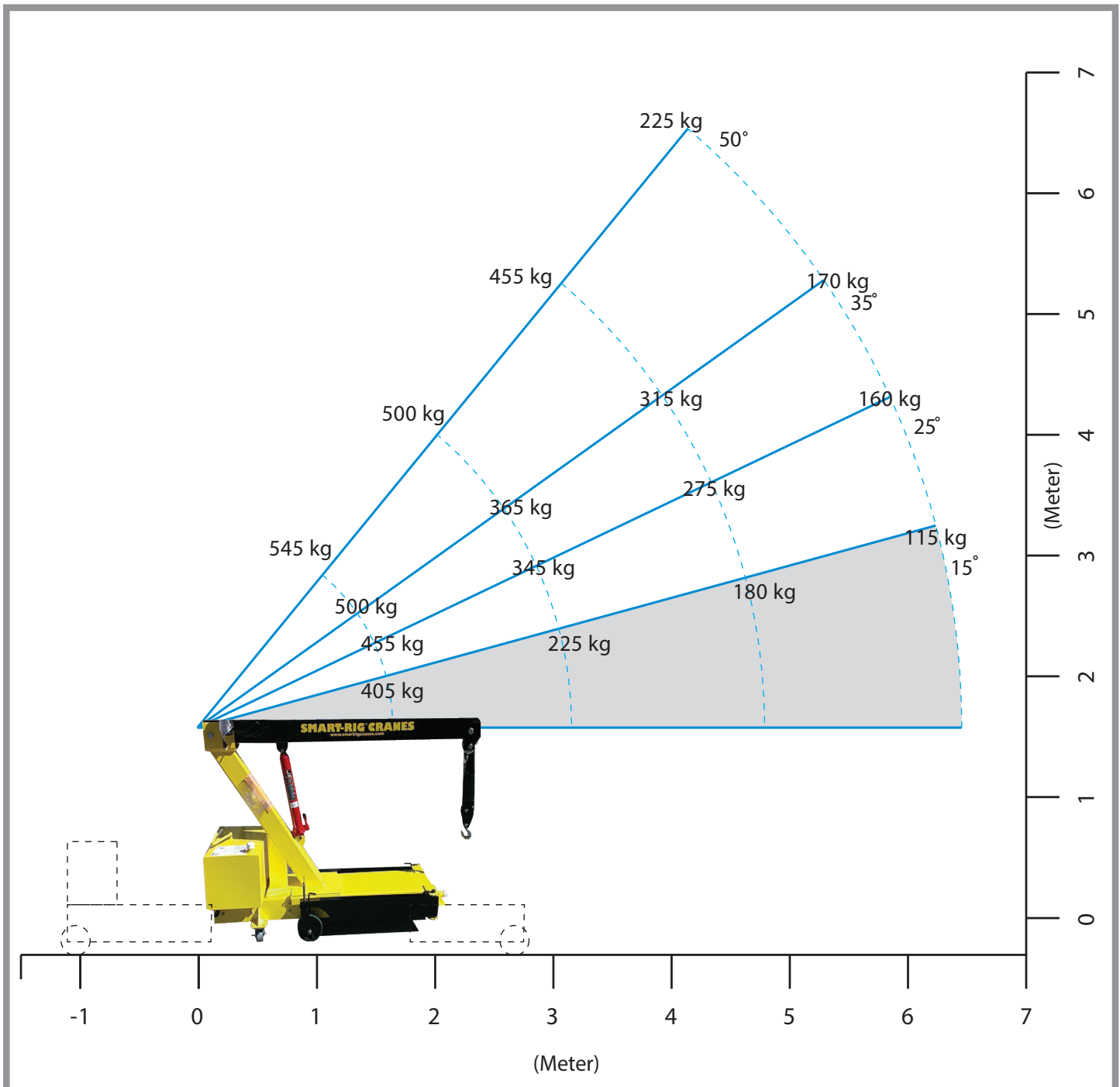
## T1 GLOBAL MODEL - ELECTRIC / HAND PUMP JACK

Designed to meet or exceed 150% rated capacity. (CE certified, meets ASME, PALD, OSHA standards)

No Operator License Required

**Load Bearing (Outriggers: 45°)**

In kg & Meter



# SMART-RIG® CRANES

The Multi-Purpose Rigging Unit

## T1 GLOBAL MODEL - ELECTRIC / HAND PUMP JACK

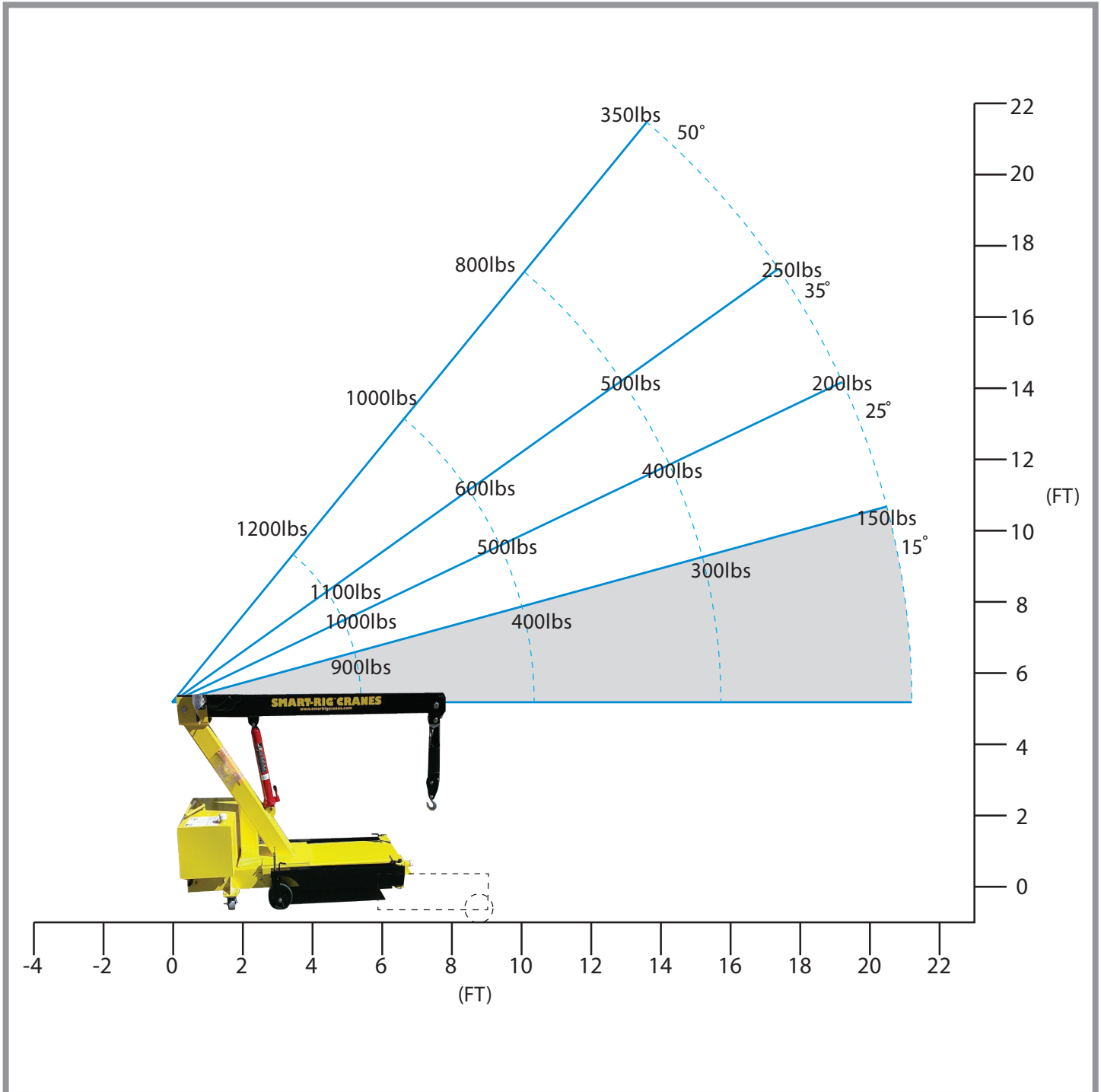
Designed to meet or exceed 150% rated capacity. (CE certified, meets ASME, PALD, OSHA standards)

No Operator License Required

TANK PUSHED IN. For use with legs in position #2 and #3 only.

**Load Bearing (Outriggers: 45°)**

In lbs. & FT



# SMART-RIG® CRANES

The Multi-Purpose Rigging Unit

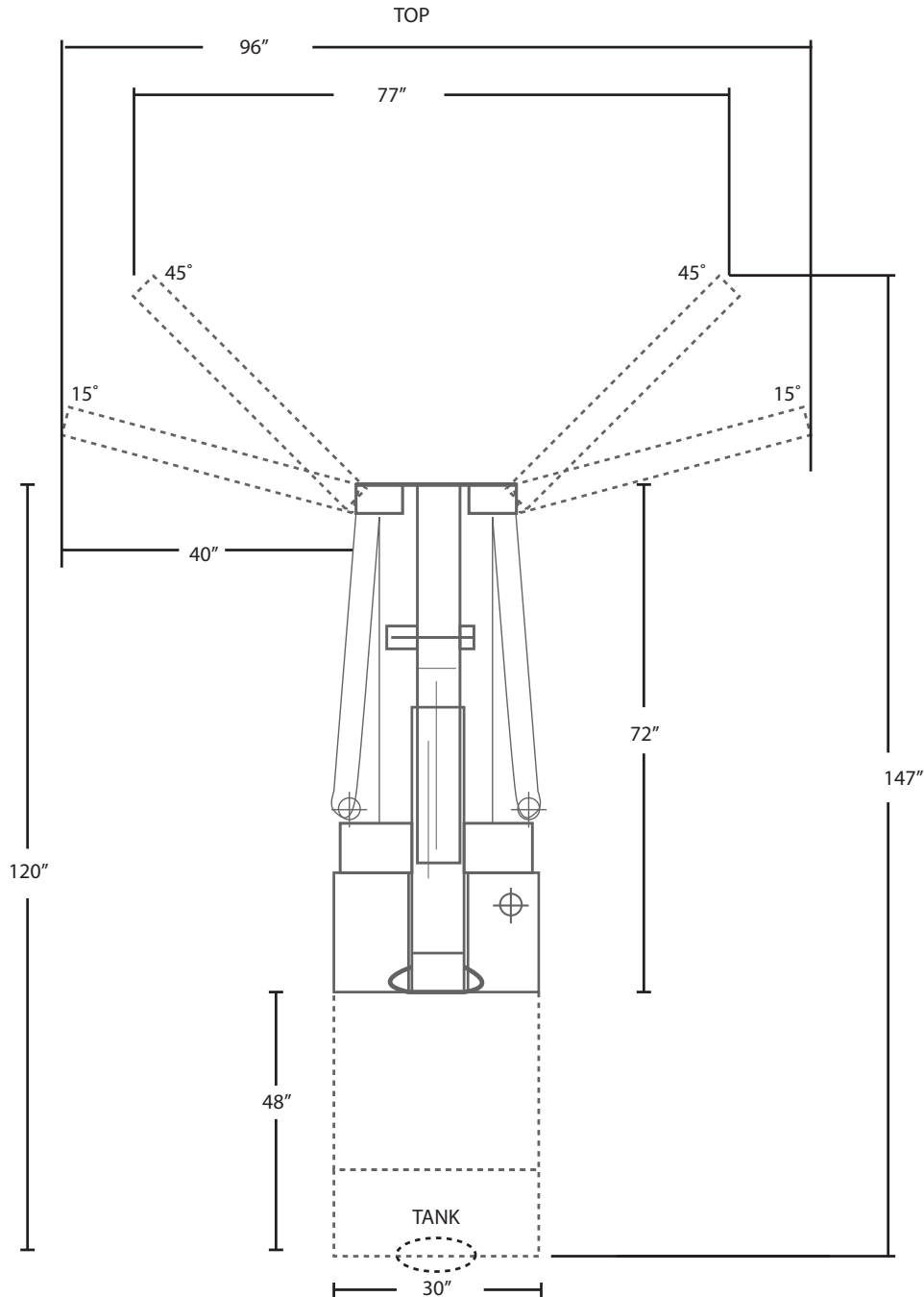
## T1 GLOBAL MODEL - ELECTRIC / HAND PUMP JACK

Designed to meet or exceed 150% rated capacity. (CE certified, meets ASME, PALD, OSHA standards)

No Operator License Required

### Footprint Dimensions

In inch.



# SMART-RIG® CRANES

The Multi-Purpose Rigging Unit

## T1 GLOBAL MODEL - ELECTRIC / HAND PUMP JACK

Designed to meet or exceed 150% rated capacity. (CE certified, meets ASME, PALD, OSHA standards)

No Operator License Required

### Footprint Dimensions

In mm.

