

SMART-RIG[®] CRANES

The Multi-Purpose Rigging Unit

S1 STANDARD MODEL

Proof Tested 150% Capacity (meets OSHA, ASME, PALD standards)

No Operator License Required

Technical specifications

Hoist meets ASME B30.5 standards

Max load capacity: 1950 lbs.

Weight: 1440 lbs.

Weight w/47 gallons water: 1850 lbs

100 ft. 1/4 in. steel cable (double lined w/ snatch block)

Hydraulic jack w/ controls

Two 6 volt marine batteries

Speed: 30FPM (feet per minute)

Wheels: 4 polyurethane on iron, 3 support casters
(won't scuff interior flooring)

Counterweight system: 400 lb. capacity tank
(fill with water, sand or cement)

Hook height: 18 ft. Hook Height

Fits through 36 in. doorways and inside elevators
Pick and carry ability

Steering: rear wheels connected to handle

Magnetic degree finder located on boom

Rear steer wheels with locking brakes

Powder coated protection

Two year warranty

Patent: D644811

Safety Stops on Boom

Snatch block / Tackle

Weatherproof on-board charger

Hook up batteries, Ready to go!



SMART-RIG® CRANES

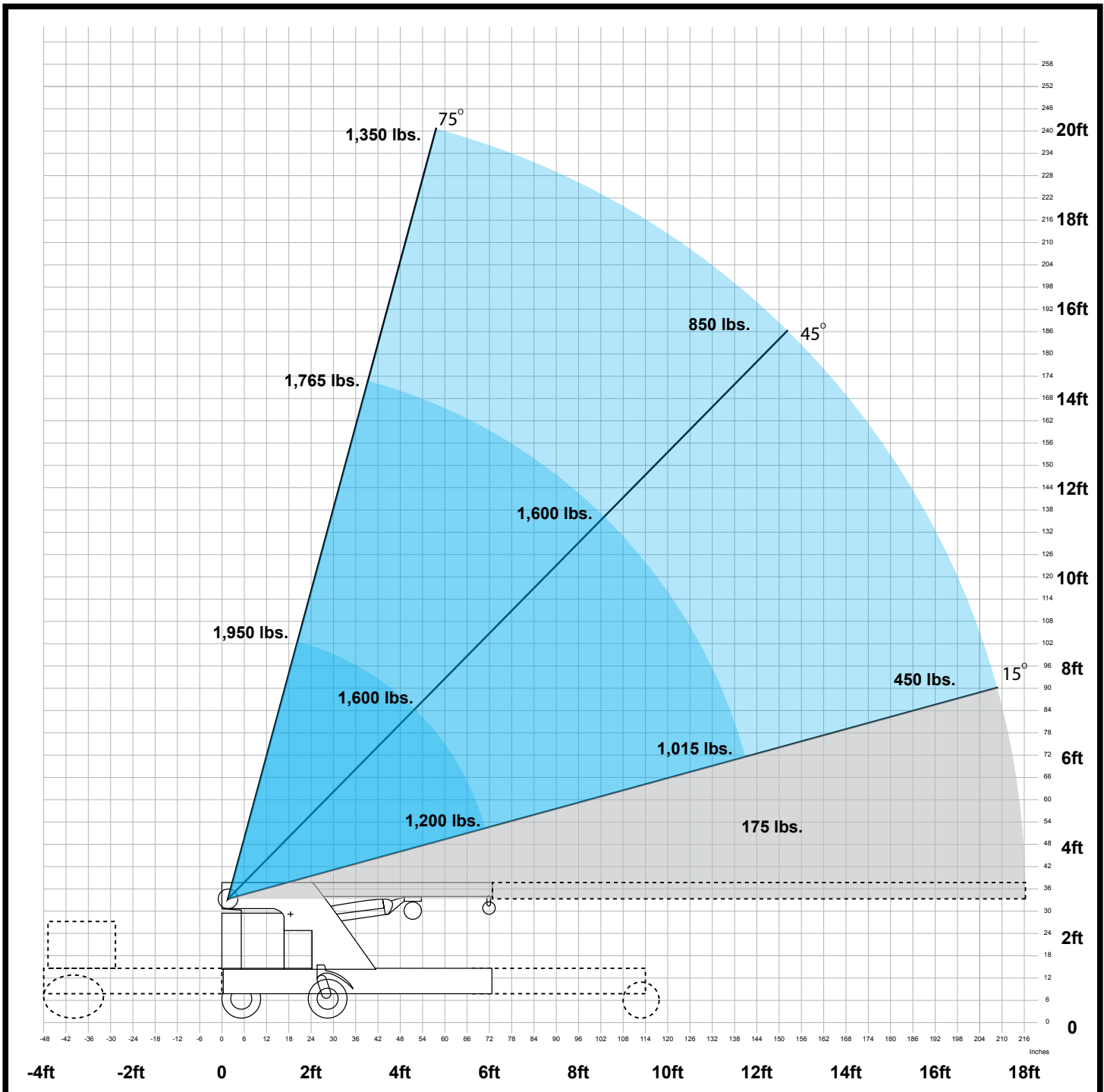
The Multi-Purpose Rigging Unit

S1 STANDARD MODEL

Proof Tested 150% Capacity (meets OSHA, ASME, PALD standards)

No Operator License Required

Load Bearing (Outriggers: 45°)



SMART-RIG® CRANES

The Multi-Purpose Rigging Unit

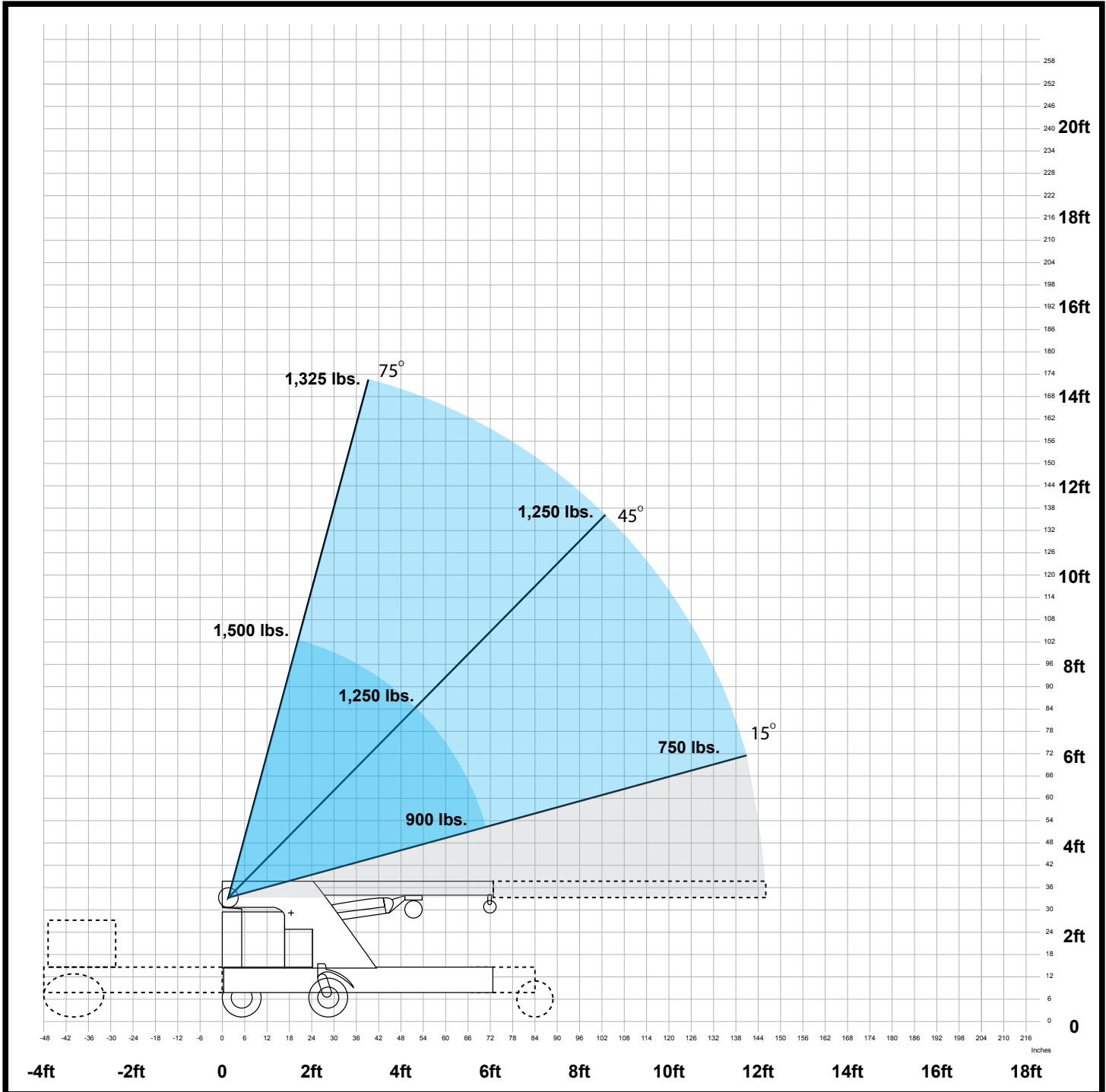
S1 STANDARD MODEL

Proof Tested 150% Capacity (meets OSHA, ASME, PALD standards)

No Operator License Required

Boom position #1 and #2 only. Outriggers: 15°

Load Bearing



SMART-RIG® CRANES

The Multi-Purpose Rigging Unit

S1 STANDARD MODEL

Proof Tested 150% Capacity (meets OSHA, ASME, PALD standards)

No Operator License Required

Footprint Dimensions

