

SMART-RIG[®] CRANES

The Multi-Purpose Rigging Unit

S1 GLOBAL MODEL

Zero Emissions

Technical specifications

CE certified

885 kg Cap. @ 2m (1,950 lbs.)

6m 3 section pull out boom

5.5m hook height (18 ft.)

Dry weight: 660 kg /840 kg tank filled w/ water

800mm wide (32 in.)

1830mm length compact (6 ft.)

100 ft. 1/4 in. steel cable (double lined w/ snatch block)

Speed: 8m/minute (25-30 FPM)

Hydraulic jack w/ control

Two 6v deep cycle batteries with weatherproof on-board charger

Fits in doors/elevators

4 polyurethane on iron wheels, 3 support casters

Rear wheels connected to steering

Manual pick and carry ability

Powder coated safety yellow

Safety stops on boom

Brake on rear wheels

CE certified winch with brake and hook w/ safety latch

Tilt sensor alarm (included)

Snatch block

Patent D644811

Test certificate

Two year warranty



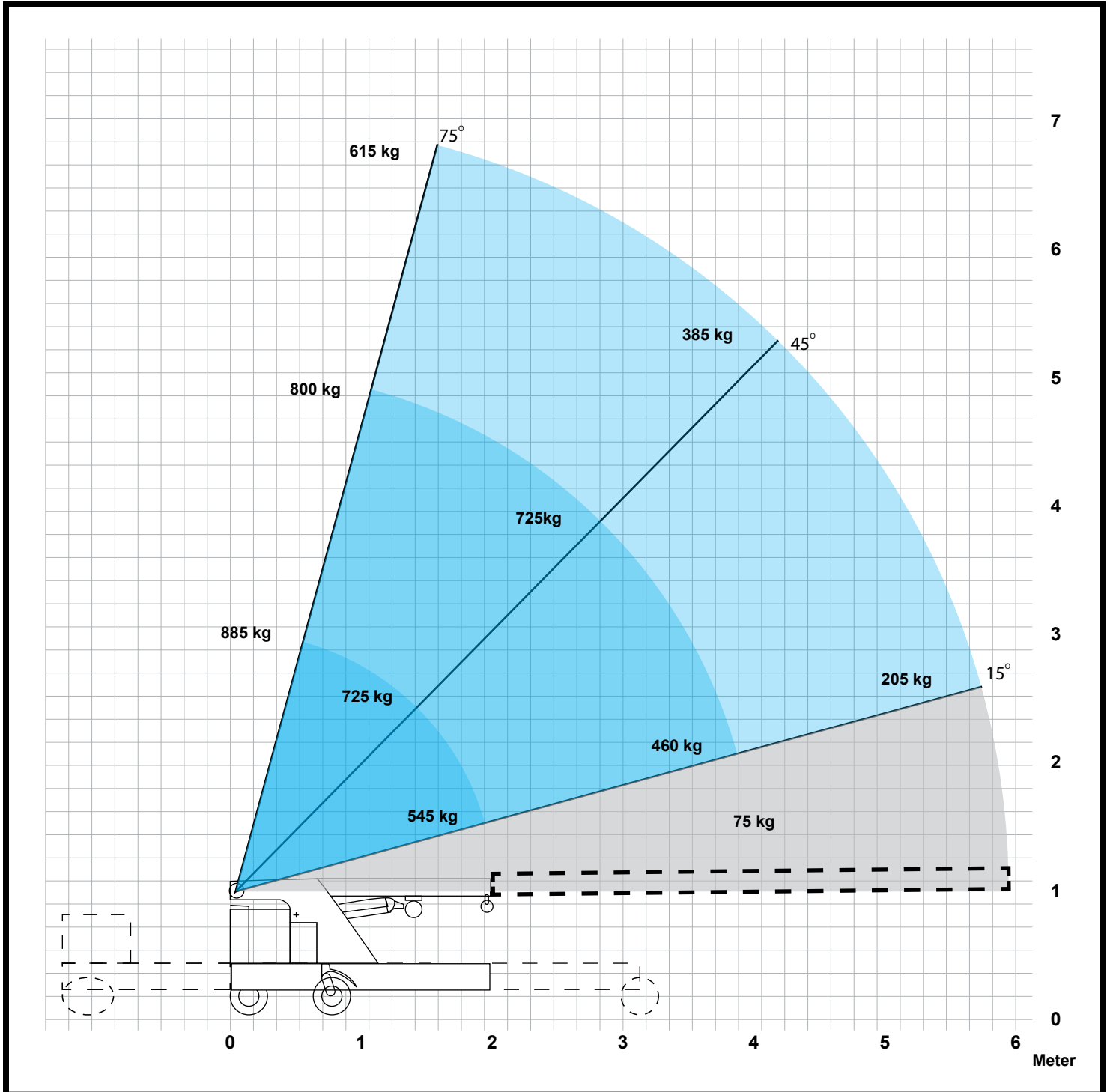
SMART-RIG® CRANES

The Multi-Purpose Rigging Unit

S1 GLOBAL MODEL

Zero Emissions

Load Bearing (Outriggers: 45°)



SMART-RIG[®] CRANES

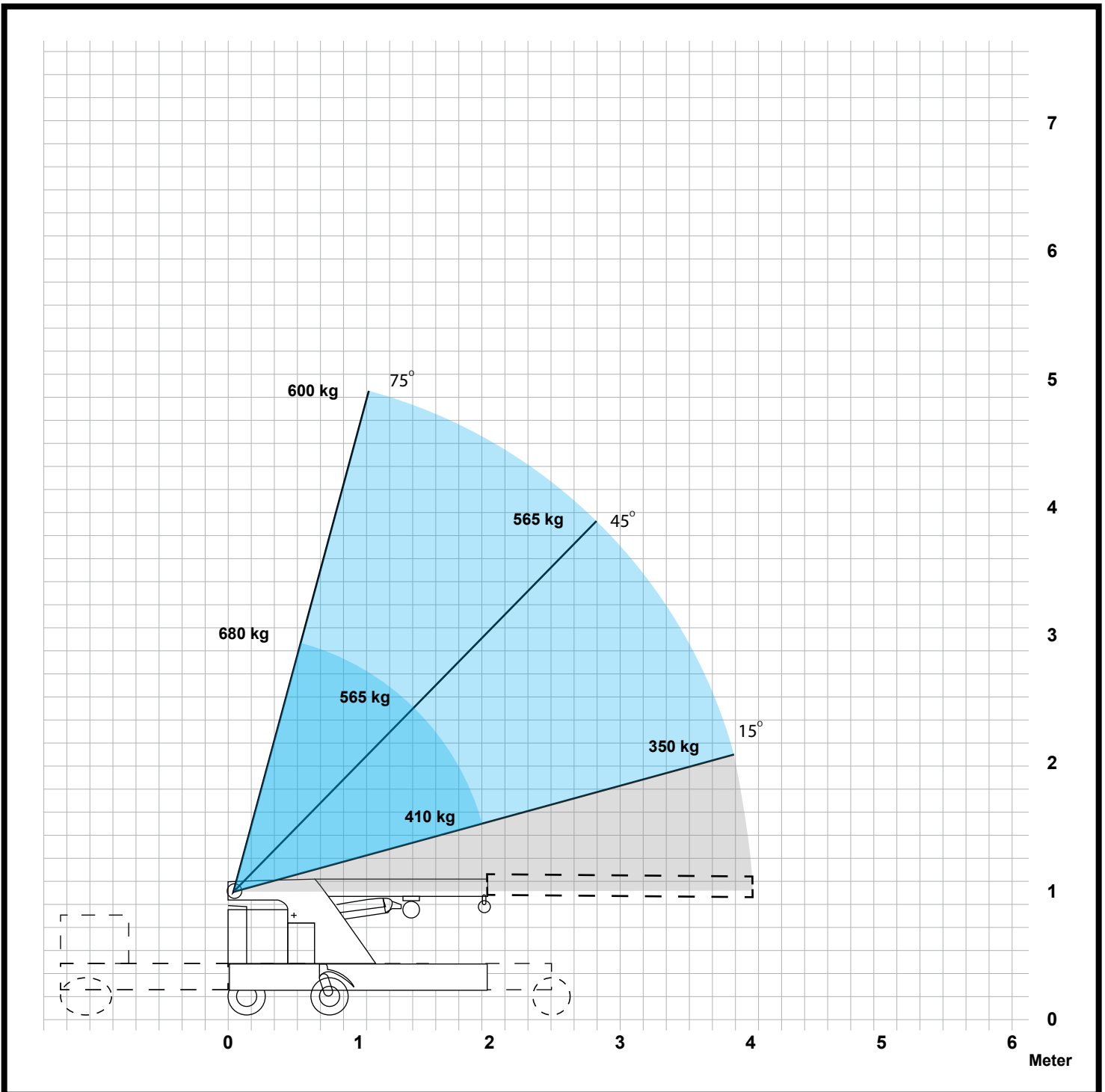
The Multi-Purpose Rigging Unit

S1 GLOBAL MODEL

Zero Emissions

Boom position #1 and #2 only. Outriggers: 15°

Load Bearing



SMART-RIG® CRANES

The Multi-Purpose Rigging Unit

S1 GLOBAL MODEL

Zero Emissions

Footprint Dimensions

